

Sears

owners manual

## GASOLINE CAMPING HEATER

MODEL NO.  
476.72247

**CAUTION:**  
Read Rules for  
Safe Operation  
and Instructions  
Carefully

- Operating Instructions
- Repair Parts



**SEARS, ROEBUCK AND CO.**  
Chicago, Illinois 60607

# operating instructions

## RULES FOR SAFE OPERATION

1. Read this Owner's Manual carefully before using the Camping Heater.
2. Always perform the lighting operation outdoors, away from open flame or other source of heat.
3. Never permit anyone to operate this appliance without first reading the instructions.

## OPERATION

### FUEL

CAUTION: Use only Sears or Coleman Fuel for long, trouble free service.

### TO FILL

Always use Sears or Coleman Fuel. Do not use automobile fuel or fuels containing lubricating oil, tetraethyl lead or other additives.

Remove filler plug from tank and fill with fuel. The tank holds approximately 3 quarts of fuel. Replace filler plug and tighten.

### TO LIGHT

**SET HEATER OUTDOORS, AWAY FROM COMBUSTIBLE MATERIALS, OPEN FLAME OR OTHER SOURCE OF HEAT.** Open the canopy and remove the snuffer from the head. Turn heater upside down until a small spot of fuel approximately the size of a tea cup appears on the head.

With the canopy open, light fuel on head with a match or lighter. Be prepared for the flame that will result. The heater will flame approximately 10 minutes. After the flame has gone out, close the canopy. Heater may now be moved inside. Maximum heat output should be reached in twenty to thirty minutes. This heater has the exclusive variable heat adjustment... from 3,000 BTU's to 5,000 BTU's output. By adjusting the heat control lever, heat output may be regulated for personal comfort.

The first time or two the heater is lit, it may not light as easily or reach maximum output as quickly. The smell of hot paint may be present during the first few lightings. Thereafter, there should be only very slight odors of fuel with this superior heater.

If heater is not producing heat after fifteen minutes, open canopy and repeat the lighting procedure.

**CAUTION: NEVER TRY TO REPEAT THE LIGHTING PROCEDURE UNTIL THE ORIGINAL LIGHTING FLAME HAS GONE OUT.**

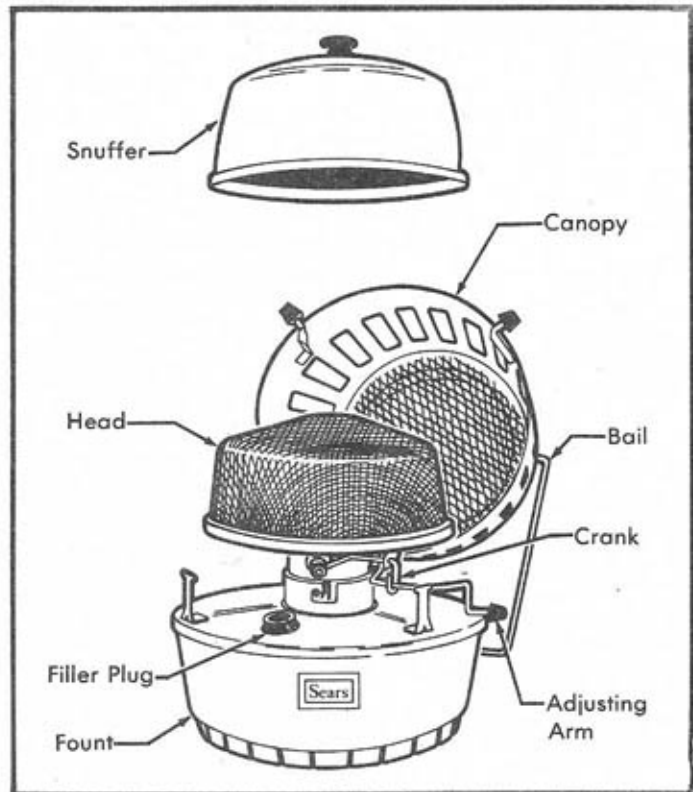
### TO EXTINGUISH

Move regulating lever to low position, open canopy and place the snuffer firmly over the head. This will minimize fumes during the extinguishing process. Close canopy.

### TO TRANSPORT HEATER

Before getting ready to travel, you may, if you like, empty the excess fuel from your heater tank. Then allow it to burn dry in order to avoid any possible spillage. If you would rather not empty it, be sure the heater is in an upright position when transporting it with fuel still remaining in the tank.

Also check to insure that the filler plug is tight. Fuel will spill through the head if the heater does not remain upright.



## SERVICE

### USE THE RIGHT KIND OF FUEL

Substances in gasoline which do not vaporize will form a residue on the wick of this heater. The length of service you get from the heater depends greatly upon the kind of fuel you use. Use only Sears or Coleman Fuel. Do not use automobile fuel. Both leaded gasoline and non-leaded gasoline will attack the catalyst used in the head and render your heater inoperable over a short period of usage.

## CAUTIONS

**DO NOT ALLOW ANYONE, ESPECIALLY CHILDREN, WHO HAS NOT READ THE INSTRUCTIONS TO FILL, IGNITE, ADJUST OR OPERATE THE HEATER.** Failure to follow the rules and instructions for safe operation could result in serious bodily injury and/or property damage.

**NEVER USE IN TIGHTLY CLOSED PLACES.** Any combustion process consumes oxygen. Ventilation is needed to prevent asphyxiation and/or carbon monoxide poisoning.

(Carbon monoxide is a colorless and odorless gas and is extremely poisonous even in small concentrations. Provide cross ventilation (Two openings) of at least 5 sq. inches each. If other combustion appliances are being used, additional ventilation should be supplied.)

**NEVER OPERATE WITH CANOPY OPEN OR ALLOW THE CANOPY TO COME IN CONTACT WITH OR BE OBSTRUCTED BY COOKING UTENSILS, SLEEPING BAGS, CLOTHING, OR ANY OTHER OBJECT.** The heater will char cloth, paper, and other combustibles.

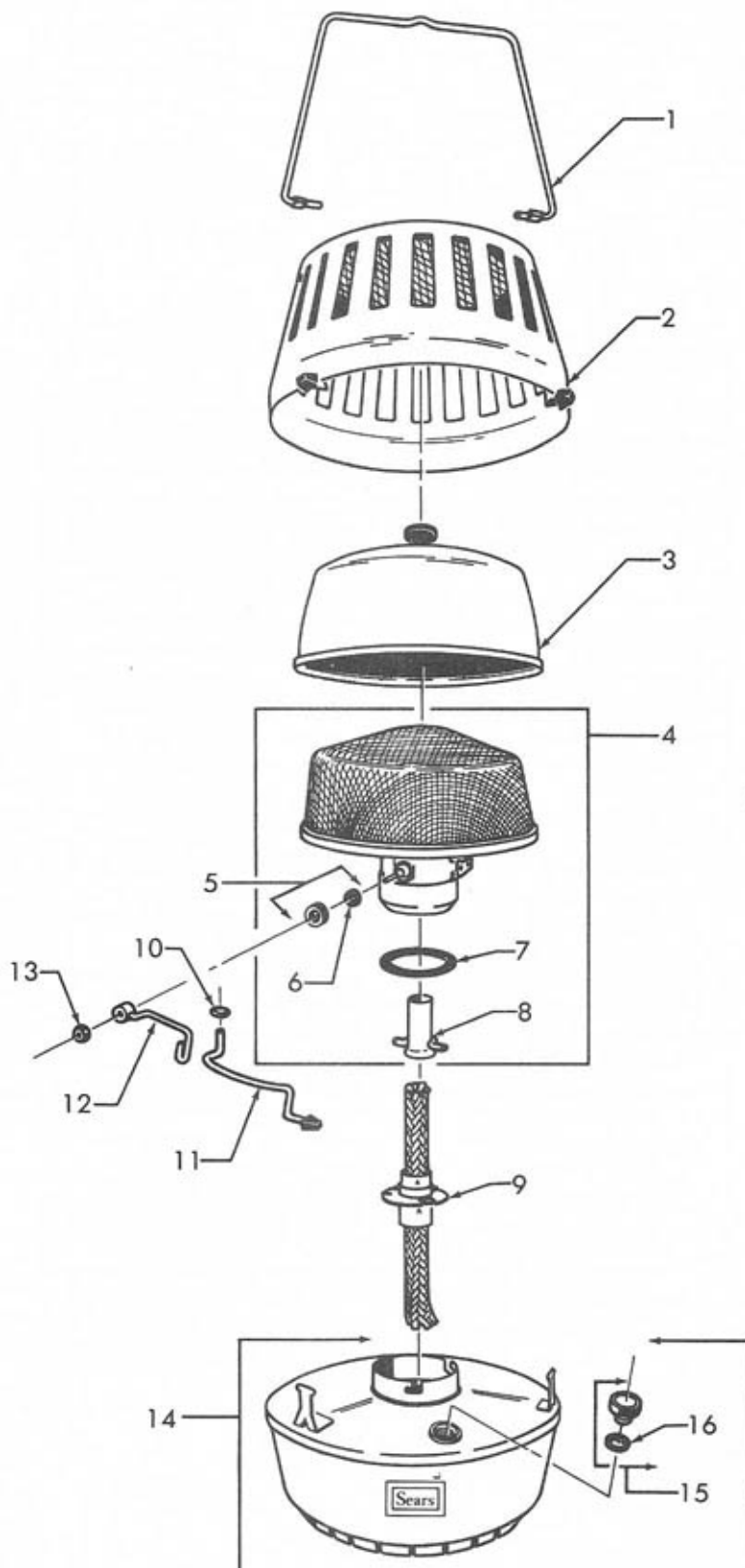
# repair parts

**NEVER TRY TO REPEAT LIGHTING PROCEDURE UNTIL INITIAL PREHEATING FLAME HAS GONE OUT.** Excessive flaming and burns could result.

**NEVER FILL OR REFILL TANK NEAR OPEN FLAME OR OTHER SOURCE OF HEAT.** The tank can be refilled while heater is burning once the preheating flame has gone out, however care should be used.

**USE EXTREME CARE WHEN HANDLING STORING OR TRANSPORTING GASOLINE.** Use only properly labeled containers. Gasoline is poisonous and extremely flammable. Its vapors are also toxic and can cause an explosion.

Model No. 476.72247



Key No.	Part No.	Description
SEE BACKPAGE FOR ORDERING INFORMATION		
1.	513-2501	Bail
2.	469-6291	Canopy Assembly
3.	513A6351	Snuffer
4.	513A6081	Head Assembly
5.	515-1801	Cap and Gasket
6.	515-1641	Ball Gasket
7.	513A2771	"O" Ring
8.	513A682	Sleeve and Pin
9.	513-6561	Wick Assembly
10.	1201B717	Push Nut
	513-2801	Adjusting Arm Assembly
12.	513-6031	Crank Assembly
13.	1201C703	Pal Nut
14.	469-6601	Fount Assembly
15.	469-1401	Filler Plug
16.	513-2531	Filler Plug Gasket
	1960E099	Customers Instruction Manual

## GUARANTEE

This Sears camping heater is guaranteed for one year from date of purchase against mechanical defect. Sears cannot be responsible for damage to wick or head due to use of improper or contaminated fuel.

SEARS, ROEBUCK AND CO.  
Chicago, Illinois 60607

ICCC/OCP

Sears

# owners manual

## GASOLINE CAMPING HEATER

**MODEL NO.**  
**476.72247**

### **HOW TO ORDER REPAIR PARTS**

**SEARS SERVICE  
IS AT YOUR SERVICE  
WHEREVER YOU LIVE  
OR MOVE IN THE U.S.A.**

The Model Number will be found on the heater. Always mention the Model Number when requesting service or repair parts for your Sears Camping Heater.

#### **HOW TO ORDER REPAIR PARTS**

All parts listed herein may be ordered through SEARS, ROEBUCK AND CO. When ordering parts by mail, selling prices will be furnished on request or parts will be shipped at prevailing prices and you will be billed accordingly.

**WHEN ORDERING REPAIR PARTS, ALWAYS GIVE THE FOLLOWING INFORMATION AS SHOWN IN THIS LIST.**

1. The PART NUMBER
2. The MODEL NUMBER
3. The PART DESCRIPTION

Your Sears merchandise takes on added value when you discover that Sears has over 2,000 Service Units throughout the country. Each is staffed by Sears-trained professional technicians using Sears approved parts and methods.

**SEARS, ROEBUCK AND CO.**  
**Chicago, Illinois 60607**